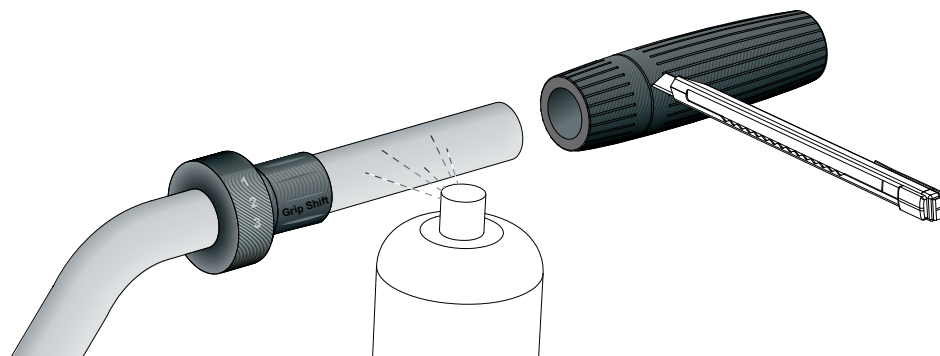


Instruction for assembly of grips



Some grips can be shortened for bicycles with a gripshift gear. Shorten the grips by cutting it off the cutline.

For assembly, spray the grips and the handle bar lightly with hairspray or clear lacquer. Slide the grip over the handle bar.

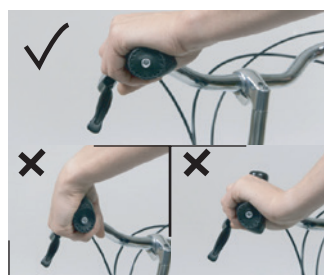
Instruction for assembly of adjustable grips



1.



2.



3.



4.

1. This grip is suitable for handlebars with an inside diameter greater than 17,5 mm. If the inside diameter of your handlebar is 19 mm or more, fit the red plug adapters supplied in the handlebar before assembly.
2. Loosen the brake levers and slide the grip on the handlebar. Tap the grip nice and firm. Gently tighten the bolt in the grip so you can still manually adjust the grip.
3. Adjust the grip so that when you are cycling your wrist and arm are in a straight line.
4. Tighten the bolt firmly in the grip so you can no longer turn the grip, not even with the force of both your hands.